

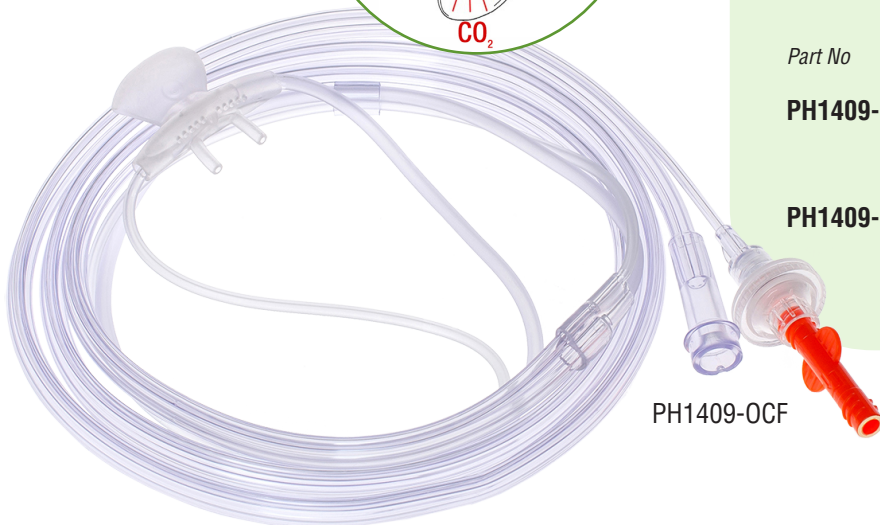
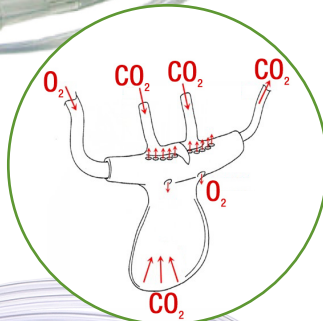
Oxygen/CO₂ Sampling Cannula with Mouthpiece



NEW



PH1409-ML



PH1409-OCF

The Parker Oxygen/CO₂ Sampling Cannula is a sidestream gas analyzer interface, to monitor every breath of a non-intubated patient by sampling the exhaled CO₂.

- Mouthpiece to help capture patient's CO₂ gases orally
- Contoured cannula provides total patient comfort
- Divided, super soft nasal prong, undiluted exhaled CO₂ gas sampling with simultaneous insufflation of O₂ or gaseous analgesia
- Nasal prong made of phthalate free and latex free material
- Oxygen tubing with inner star lumen design
- Over the ear fit secures position on the patient

Part No	Description	QTY
PH1409-ML	Adult Nasal/Oral Dual CO ₂ sampling cannula 2.1 metre tubing, Male Luer Lock Connection	50
PH1409-OCF	Adult Nasal/Oral Dual CO ₂ sampling cannula Hydrophobic Filter, 2.1 metre tubing, Orange Input Connector	50

ARTG: 406277



www.parkerhealth.com.au
www.parkerhealth.com.my
www.parkerhealth.co.nz